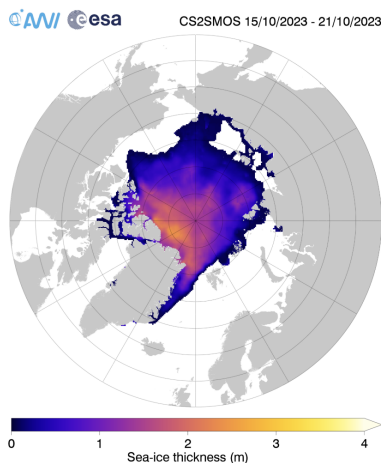


# L4 CryoSat-2/SMOS near real-time sea ice thickness processing started for 2023/24 winter season

Operational processing and dissemination of the L4 CryoSat-2/SMOS near real-time sea ice thickness product has been resumed for the winter season of 2023/24 with data since 15 October 2023. See [CryoSat-SMOS Merged Sea Ice Thickness](#) for updates of version 206.



First sea ice thickness data from the L4 CryoSat-2/SMOS v206 near real-time product (Oct 15 - Oct 21, 2023)