

DSHIP

DSHIP is a complex measurement data management system, developed by Werum Software & System CIS AG. DSHIP provides a variety of configuration, diagnosis, and control features to record data from different instruments, distribute data on board the vessel, visualize data, and to export data from the database. The system is provided on the vessels Polarstern, Heincke, Mya II and Uthoern and at the Neumayer-Station III. Data is transferred to the onshore data archive (dship.awi.de) after the campaigns.

Parts of the DSHIP system are:

- **Core System** for data acquisition
- **Action-Log** as an event tracker for device usage
- **Mapviewer** as a map visualisation system for navigation and scientific information
- **Connection** to the **REGISTRY.awi.de** for device selection and event triggering
- **Onshore data archive** to access data from all past research campaigns

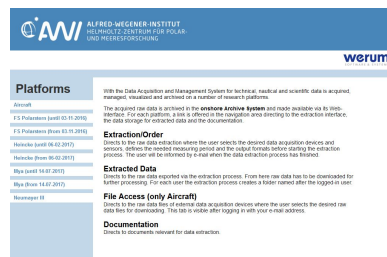


Onshore data archive

Access all DSHIP data from past campaigns at:

DSHIP.awi.de

[User Manual for Data Extraction](#)



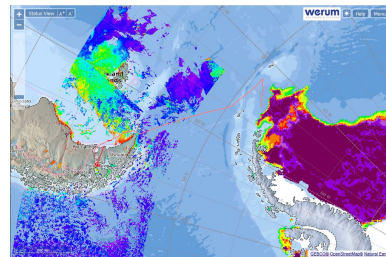
Use o2a-support@awi.de for questions/comments

Onshore Mapviewer

Access an onshore instance of the onboard's Mapviewer at:

MAPVIEWER.awi.de

[Manual for Mapviewer](#)



Onboard DSHIP (available onboard only)

[User Manual for usage onboard](#)

