

DATA ACQUISITION

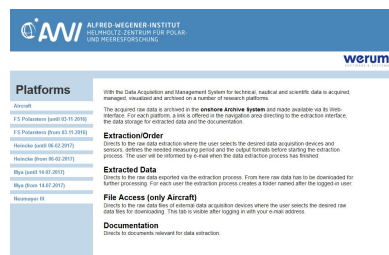
DSHIP is a complex measurement data management system, developed by Werum Software & System CIS AG. DSHIP provides a variety of configuration, diagnosis, and control features to record data from different instruments, distribute data on board the vessel, visualize data, and to export data from the database. The system is provided on the vessels Polarstern, Heincke, Mya II and Uthoern. Further more on the polar aircraft Polar 5 and Polar 6 and the Neumayer III station. Parts of the Dship-system are:

- **Core System** for data acquisition
- **Action-Log** as an event tracker for device usage
- **Mapviewer** as an map visualisation system for navigation and scientific information
- **Connection** to the **REGISTRY.awi.de** for device selection and event triggering
- **Connection** to the **mobile APP** for sample collection



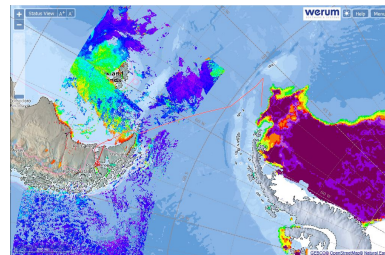
Onshore database access for vessel, aircraft and station **DSHIP.awi.de**

User Manual for Data Extraction



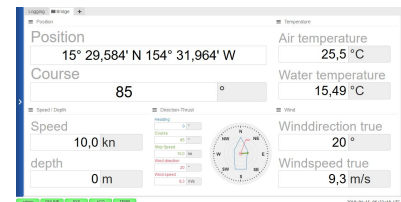
Onshore Mapviewer **MAPVIEWER.awi.de**

Manual for Mapviewer



Onboard DShip - System (available onboard only)

User Manual for usage onboard



Use [dms \(at\) awi.de](mailto:dms(at)awi.de) for questions/comments