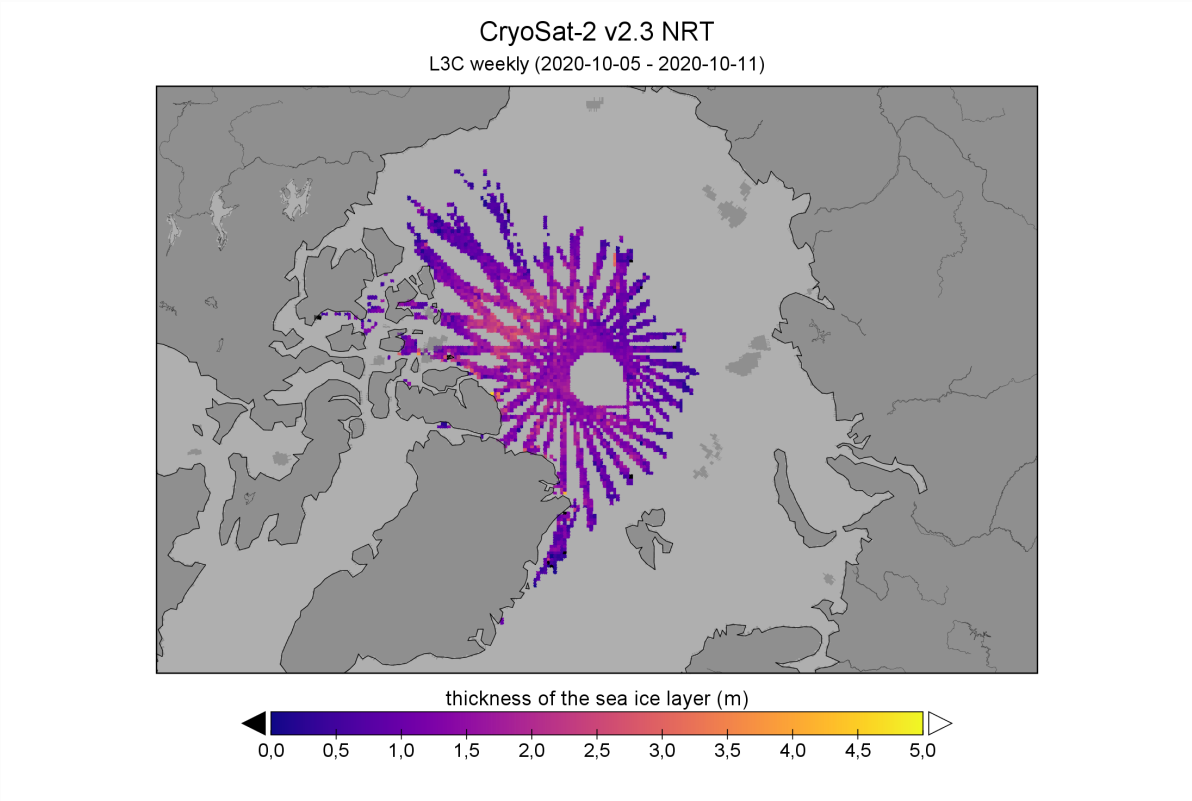


# CryoSat-2 v2.3 NRT production now operational

The production of operational sea-ice thickness information from near real-time CryoSat-2 data has resumed:

	Near-real time (2 days delay)
Daily Trajectory	<a href="#">l2p_trajectory/Latest</a> (updated daily)
Weekly Gridded	<a href="#">l3c_grid/weekly/Latest</a> (updated on Tuesday)
Monthly Gridded	<a href="#">l3c_grid/monthly/Latest</a> (Updated on 2nd day of following month)

**i** Please note that gaps in the NRT input data (see previous [blog post](#)) still exist. The production team is in contact with ESA and the investigation is ongoing.



Reprocessed CryoSat-2 data from October will start to become available in the beginning of November.