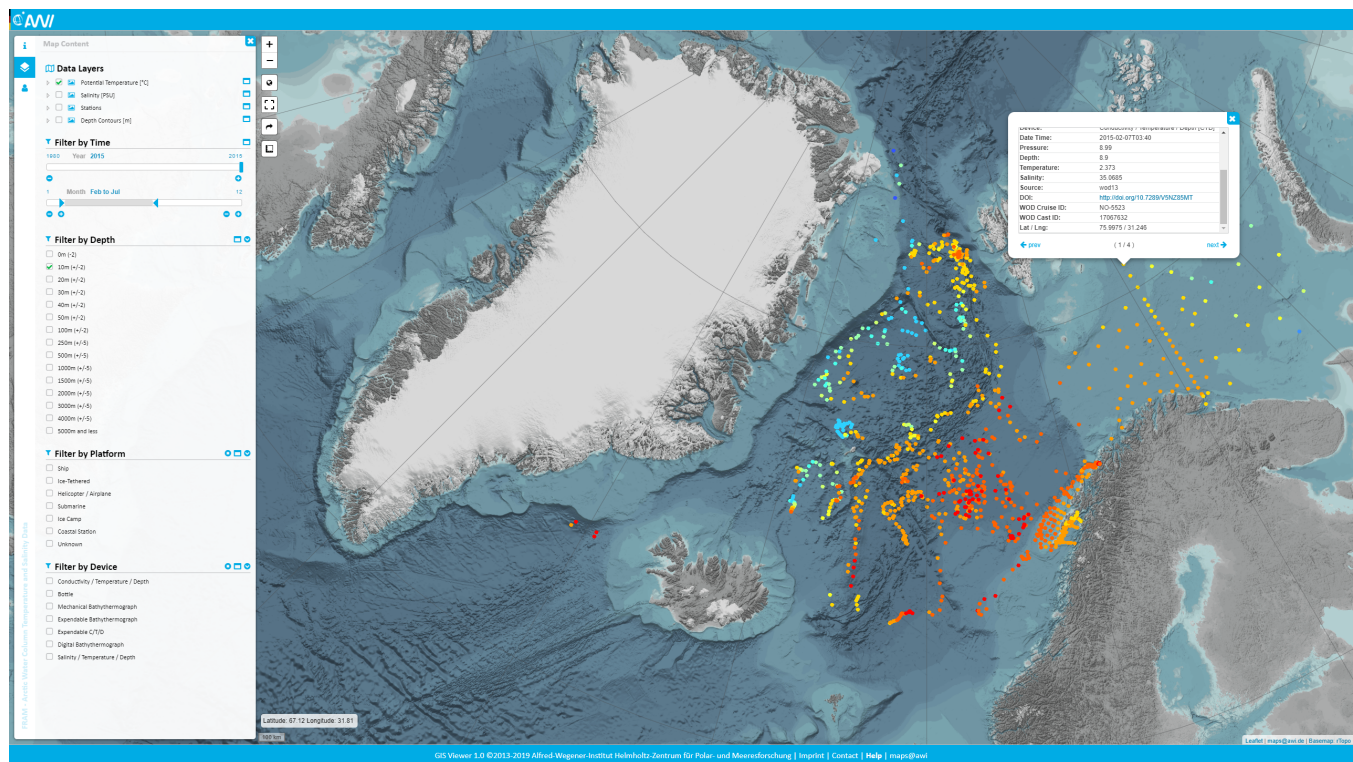


ANALYTICS

I) INFRASTRUCTURE & TOOLS

JupyterHub	https://jupyterhub.awi.de ; read documentation Access currently restricted to AWI accounts
RASD AMAN	http://rasdaman1.dmawi.de/ Provides a powerful array analytics for multidimensional large-scale datasets. Mockup illustrates how to extract data subsets including along a profile and how to perform certain queries in a federated environment
GitLab	https://gitlab.awi.de ; read documentation Provides an open-source software development platform supporting controlled access to software projects
Code repository	https://github.com/o2a-data (O2A-data code repository) A software development platform with built-in version control, issue tracking, code sharing and review, etc. Within the project "O2A-data" we provide open-access examples on how to download, perform basic analysis and visualize data stored in various backends using Jupyter Notebook
AI Tools	Learn more about tools and projects

II) VISUALIZATION



MAPS.awi.de lists scientific projects, that display scientific results as digital data services in a spatial context using webGIS technology. It provides

- **Browse** by region and project
- **Search** by keyword
- **Project specific** abstracts + links to project related data viewers with comprehensive data products and complementary information
- **Re-use of layers** in Desktop GIS Applications (e.g. ArcGIS, qGIS, ...), AWI data portal under "Collections" and DASHBOARD

Recommended Videos

