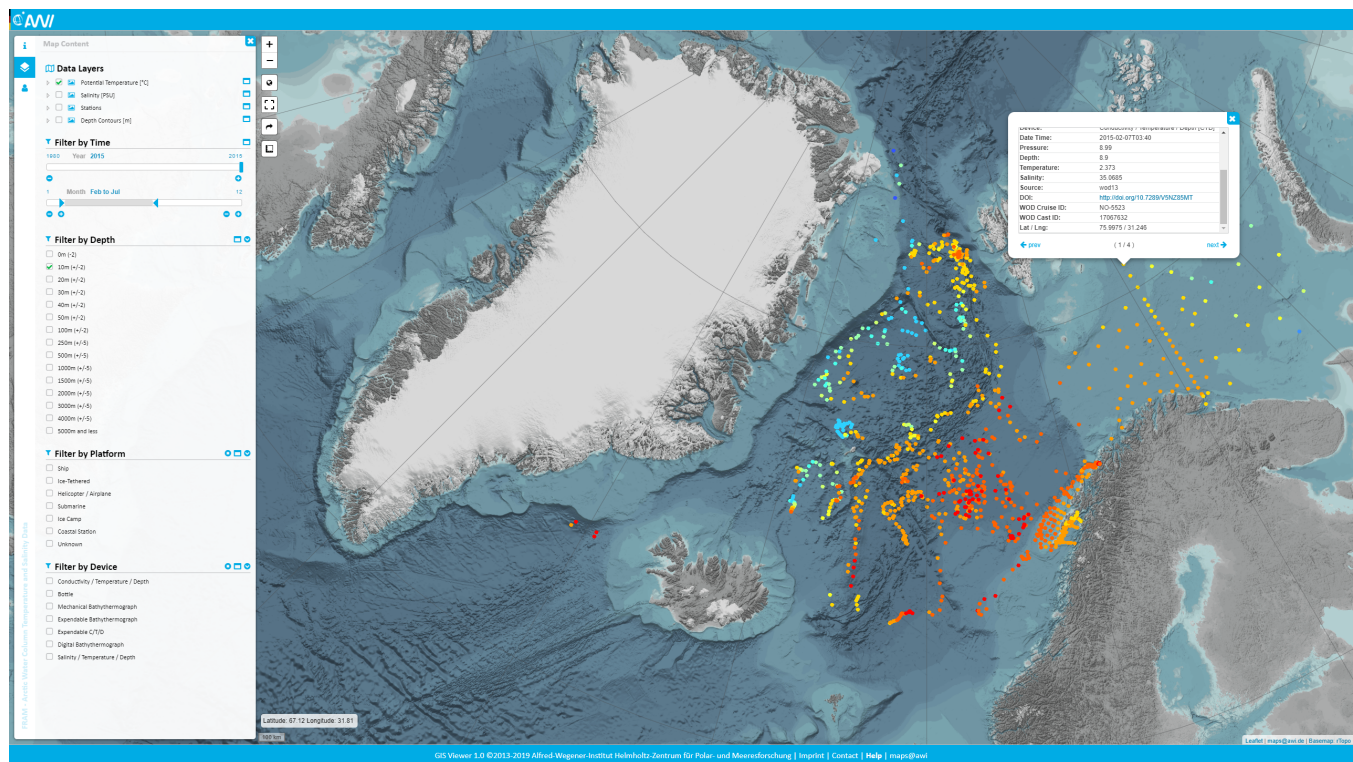


# ANALYTICS

## I) INFRASTRUCTURE & TOOLS

JupyterHub	<a href="https://jupyterhub.awi.de">https://jupyterhub.awi.de</a> ; read <a href="#">documentation</a> Access currently restricted to AWI accounts
RASD AMAN	<a href="http://rasdaman1.dmawi.de/">http://rasdaman1.dmawi.de/</a> Provides a powerful array analytics for multidimensional large-scale datasets. Mockup illustrates how to extract data subsets including along a profile and how to perform certain queries in a federated environment
GitLab	<a href="https://gitlab.awi.de">https://gitlab.awi.de</a> ; read <a href="#">documentation</a> Provides an open-source software development platform supporting controlled access to software projects
Code repository	<a href="https://github.com/o2a-data">https://github.com/o2a-data</a> (O2A-data code repository) A software development platform with built-in version control, issue tracking, code sharing and review, etc. Within the project "O2A-data" we provide open-access examples on how to download, perform basic analysis and visualize data stored in various backends using Jupyter Notebook
AI Tools	Learn more about <a href="#">tools and projects</a>

## II) VISUALIZATION



**MAPS.awi.de** lists scientific projects, that display scientific results as digital data services in a spatial context using webGIS technology. It provides

- **Browse** by region and project
- **Search** by keyword
- **Project specific** abstracts + links to project related data viewers with comprehensive data products and complementary information
- **Re-use of layers** in Desktop GIS Applications (e.g. ArcGIS, qGIS, ...), AWI data portal under "Collections" and DASHBOARD

## Recommended Videos

