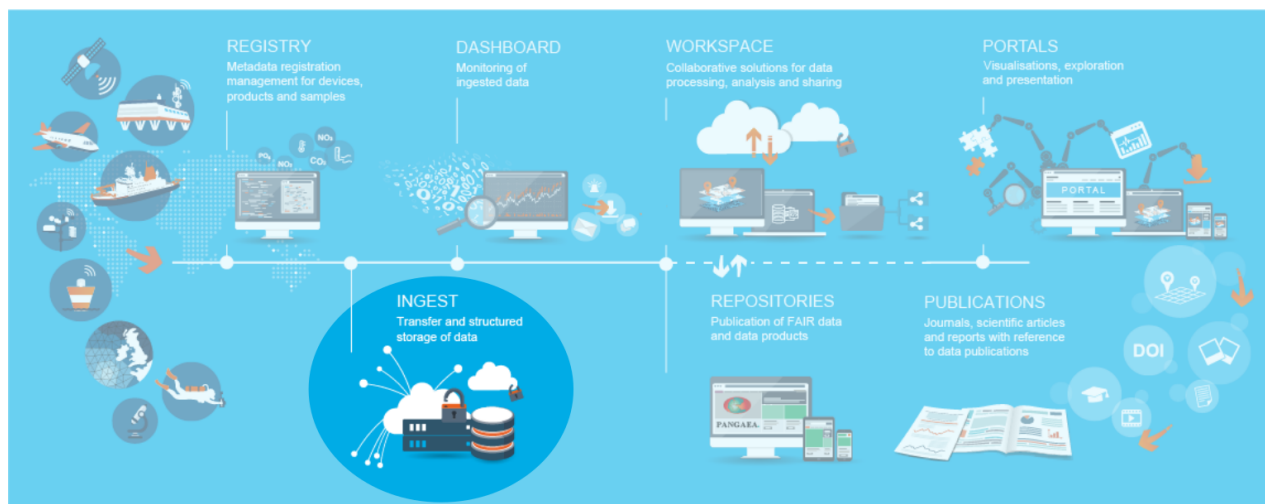


INGEST

The raw data ingestion is the part of the steps between the sensor description and the data archiving in PANGAEA.



Further information will be found in this chapter:

Only three steps to archive your sensor data

- Step 1 - Describe your sensor and your sensor output data
 - A Sensors raw Data Description
- Step 2a - Sensor installed on an AWI large scale research platform (Central data transmission)
- Step 2b - Sensor installed on a platforms with satellite link (Near RealTime data transmission)
- Step 2c - Sensor installed on a platform without internet connection (Your data transmission)
- Step 3 - Archiving sensor data