

A Type



C Type

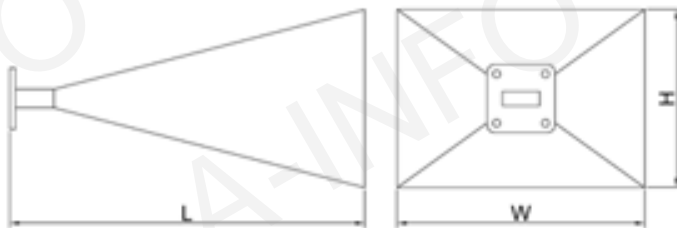


## Technical Specification

Frequency Range(GHz)	8.2 - 12.4
Gain(dB)	20 Typ.
3dB Beamwidth(deg)	18 Typ.
Waveguide	WR90
Material	Al
Output	A Type: FBP100 / C Type: SMA-F or N-F
Size(mm) W x H x L	A Type: 138x107x200 / C Type: 138x107x238
Net Weight(Kg)	A Type: 0.25 Around / C Type: 0.3 Around

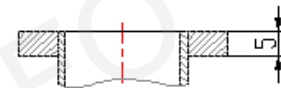
## Outline Drawing (Size: mm)

A Type

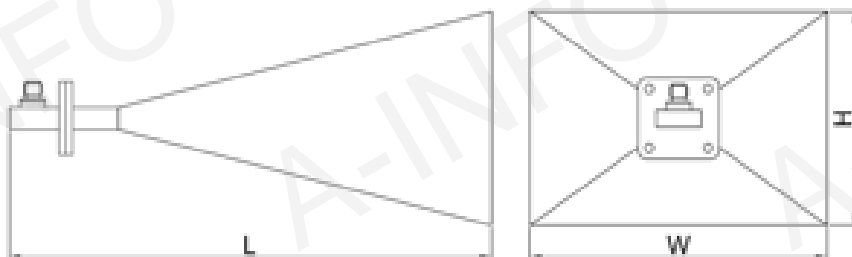


W x H x L: 138x107x200

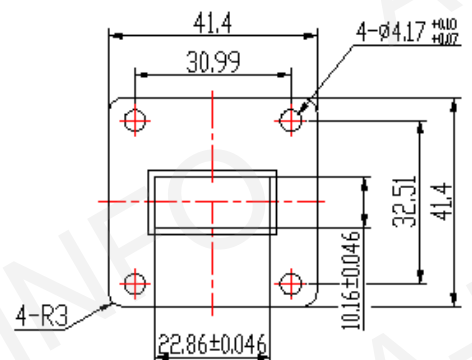
Flange Drawing



C Type



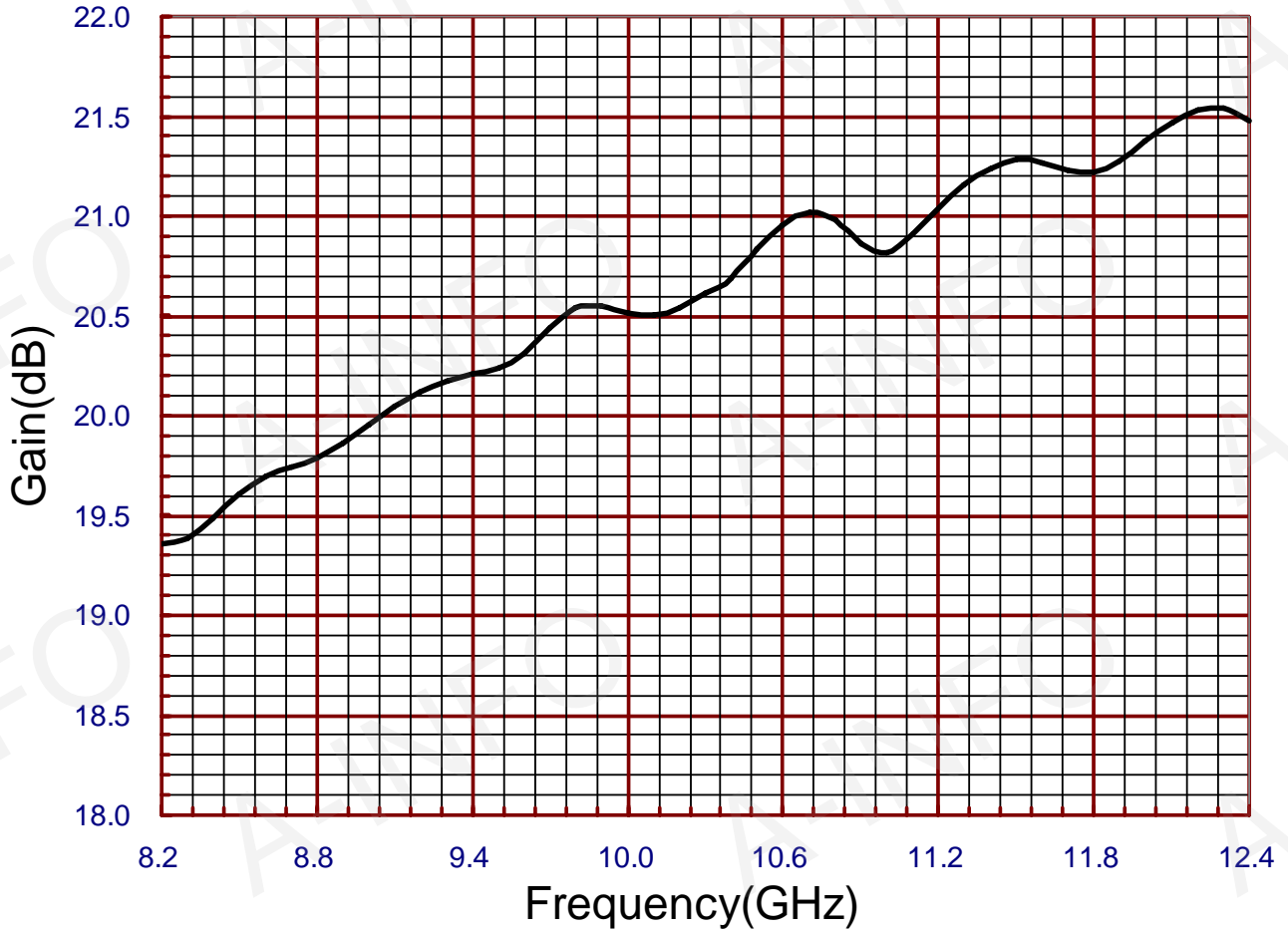
W x H x L: 138x107x238



FBP100

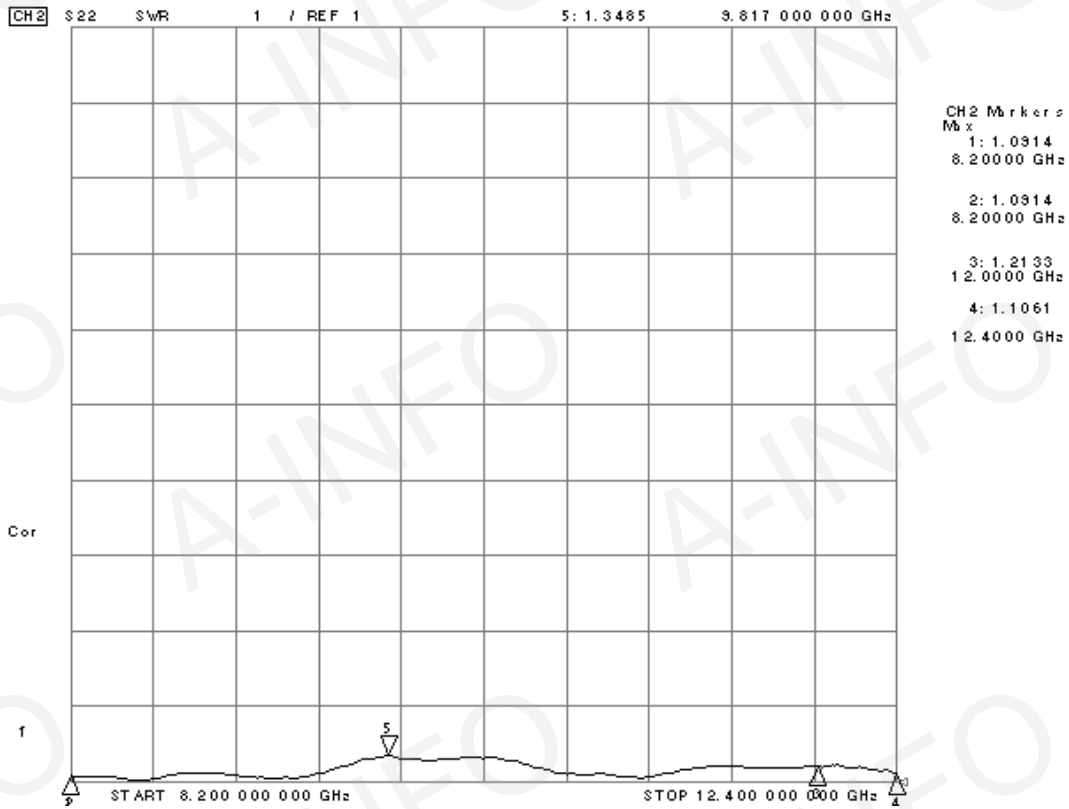
## Test Results

### 1. Gain

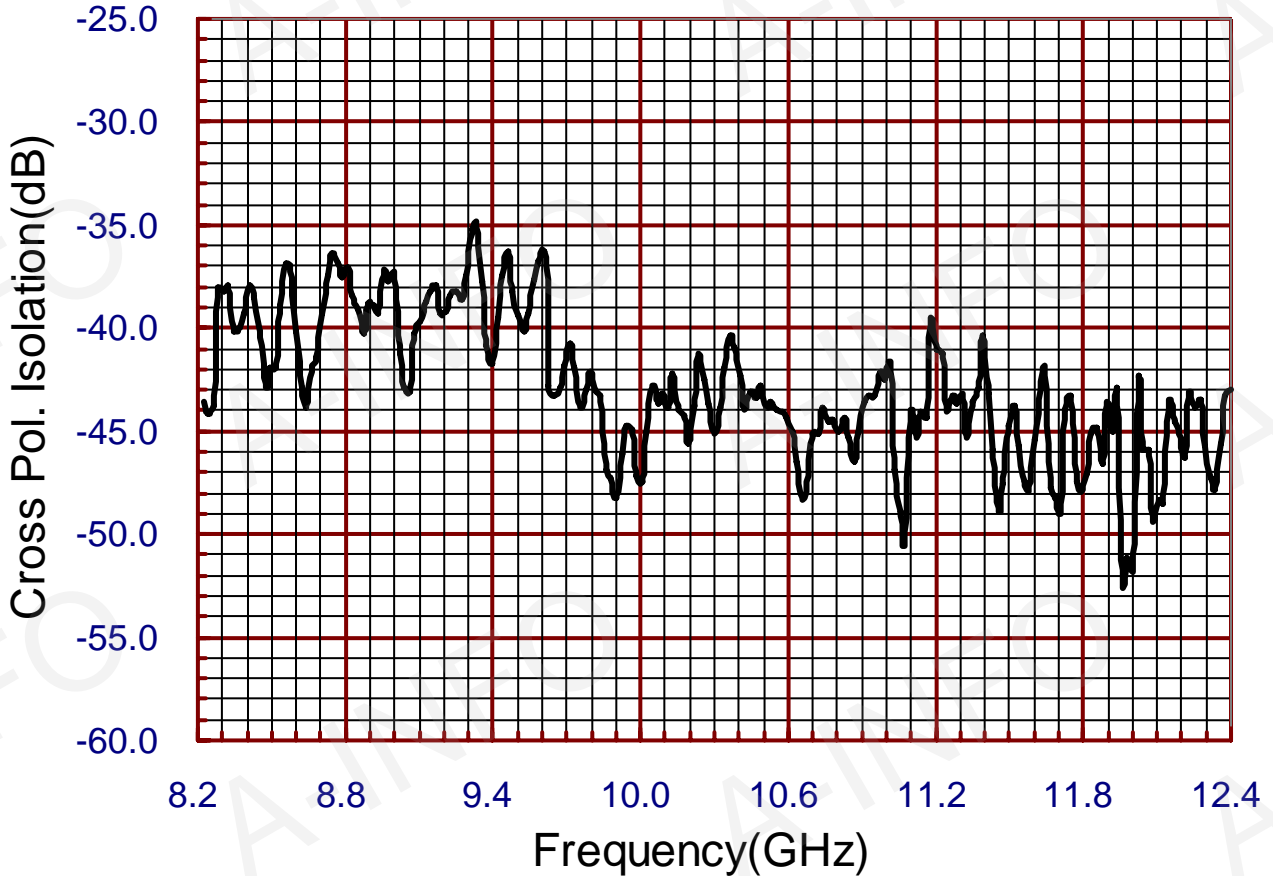


F(GHz)	8.2	8.3	8.4	8.5	8.6	8.7	8.8	8.9	9.0	9.1	9.2
G(dB)	19.36	19.39	19.49	19.60	19.70	19.75	19.79	19.87	19.96	20.04	20.12
F(GHz)	9.3	9.4	9.5	9.6	9.7	9.8	9.9	10.0	10.1	10.2	10.3
G(dB)	20.17	20.21	20.24	20.31	20.44	20.54	20.55	20.51	20.50	20.54	20.62
F(GHz)	10.4	10.5	10.6	10.7	10.8	10.9	11.0	11.1	11.2	11.3	11.4
G(dB)	20.69	20.83	20.95	21.02	20.98	20.86	20.82	20.91	21.04	21.16	21.24
F(GHz)	11.5	11.6	11.7	11.8	11.9	12.0	12.1	12.2	12.3	12.4	
G(dB)	21.28	21.26	21.23	21.22	21.28	21.37	21.47	21.53	21.54	21.48	

## 2. VSWR



## 3. Cross Polarization Isolation



## 4. Pattern

